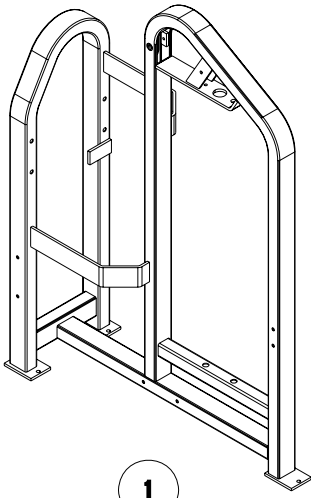
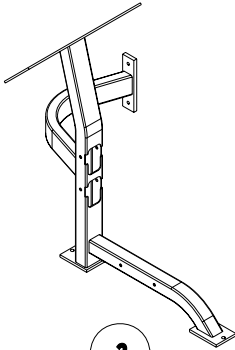


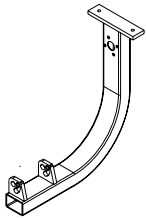
# S-101 SELECTORIZED ARM CURL



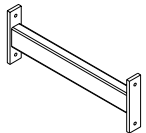
1



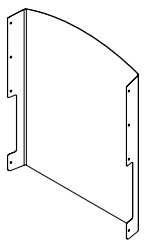
2



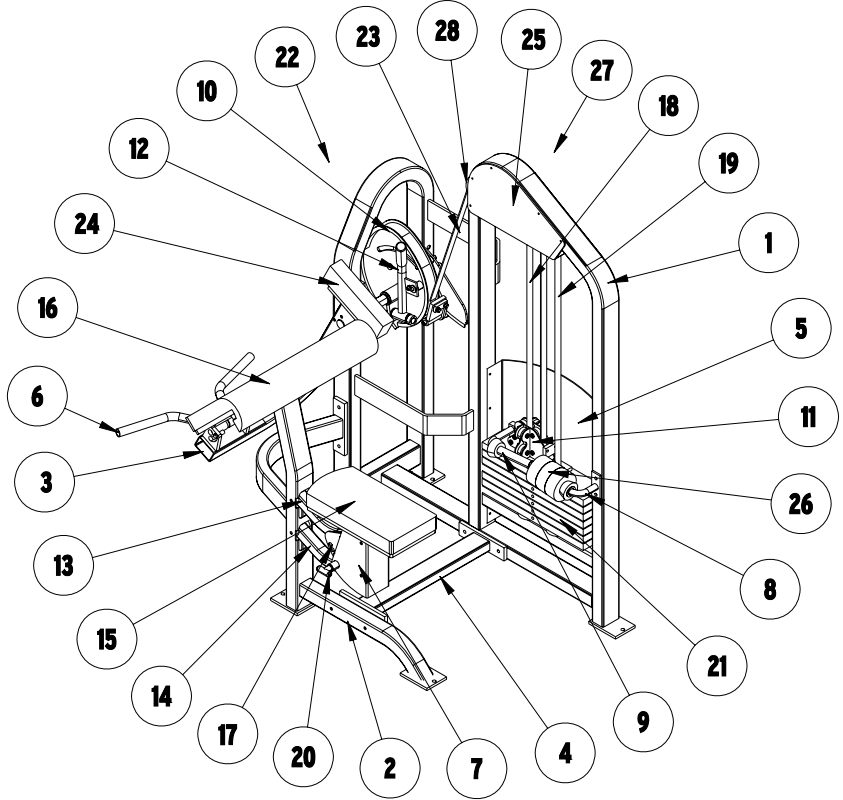
3



4



5



ITEM	PART DESCRIPTION	QT	ITEM	PART DESCRIPTION	QT	ITEM	PART DESCRIPTION	QT
1	WELD,FRM,WEIGHT S-101	1	11	ASSY, TOP PLATE, 7 STEM	1	21	ASSY, WGT, 20# STANDARD, 4x19	7
2	WELD,FRM,EXERCISE S-101	1	12	ASSY, HANDLE, CAM MED RIGHT	1	22	BEAR, PILLOW, 1.25 ID	1
3	WELD,ARM,EXERCISE S-101	1	13	WELD, LINK, SEAT, TOP LEFT	1	23	BELT, FLAT, 0.094x1x 85"	1
4	WELD,CROSS BRACE 22.25	1	14	WELD, LINK, SEAT, BOT LEFT	1	24	CWEIGHT, TAP/VINYL DIP, 18# BLK	1
5	BENT, SHT, WEIGHT SHIELD	1	15	UPH, PAD, SEAT/BACK 8.25x16.25	1	25	DECAL, INSTRUCTIONAL, S-101	1
6	ASSY, HANDLE P/S-101	2	16	UPH, PAD, ARM REST 11.5x24.25	1	26	WGHT, 5# ADON, 4.75 ODx1.75 BLK	3
7	WELD, SEAT, S/K-101/25/27	1	17	PLATE, RANGE, SEAT, STAINL	1	27	DECAL, LOGO, STRIVE, RIGHT	1
8	ASSY, ADD-ON HOLDER, WFU	1	18	*CP075 ,TAPPED ,44.00"	1	28	PULLEY, BELT, 0.38 IDx4.5 OD BLK	2
9	ASSY, ADD-ON HOLDER, TPU	1	19	*CP075 ,GROOVED ,44.00"	1			
10	ASSY, CAM, SMART, MED STD	1	20	ASSY, POPPER PIN, 0.5x1.5	1			



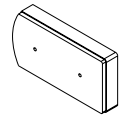
6



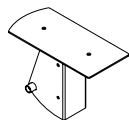
9



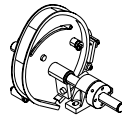
12



15



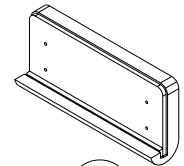
7



10



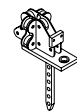
13



16



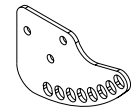
8



11



14



17